

UNIRI RITEH, Rijeka, Croatia 12-14.06.2024

# NEST4WB PMC digging into PM<sup>2</sup> methodology

*"Funded by the European Union. Views and opinions expressed are however those of the author(s) only and do not necessarily reflect those of the European Union or the European Education and Culture Executive Agency (EACEA). Neither the European Union nor EACEA can be held responsible for them."*

**JOAQUIN ORDIERES-MERÉ,**  
*Full Professor,*

## OUTLINE

- \* What is this?
- \* Project Lifecycle
- \* PM<sup>2</sup> Processes
- \* PM<sup>2</sup> Artifacts
- \* PM<sup>2</sup> Templates
- \* Relevant aspects



Open Project Management  
Methodology



## What is PM<sup>2</sup>

PM<sup>2</sup> (pronounced “P-M squared”) is a Project Management Methodology developed by the European Commission.

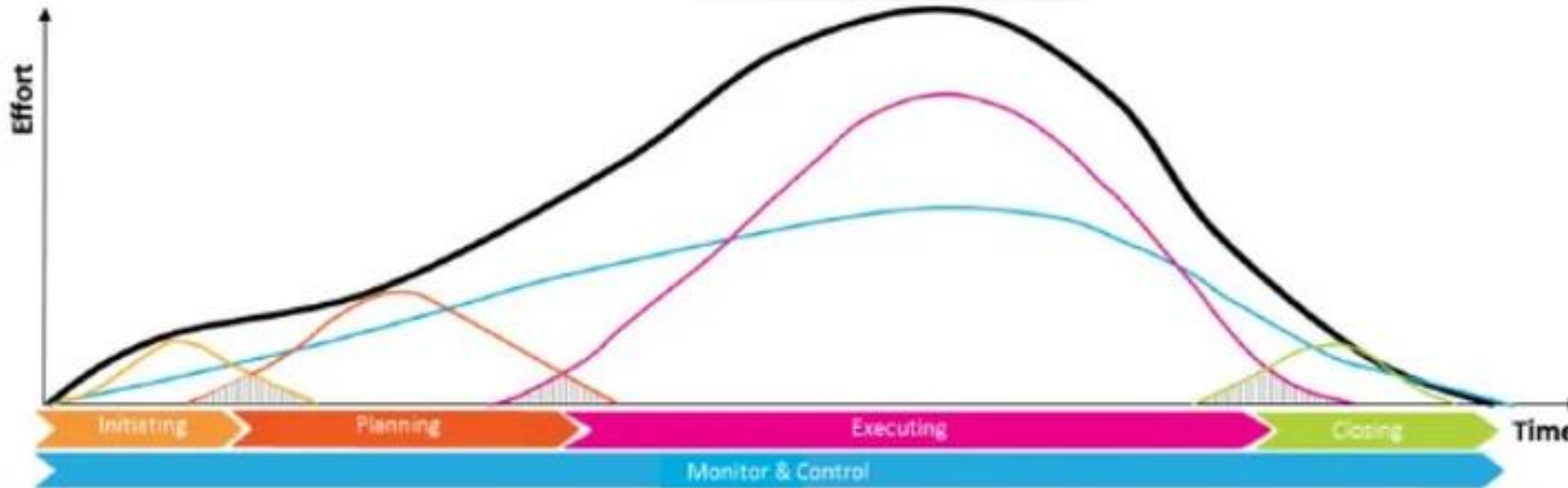
The PM<sup>2</sup> Methodology is the **official** project management methodology of the EC and is currently being rapidly adopted internationally.

It is **based on operational experience** from projects **run within the European Institutions**, but also incorporates elements from a wide range of **globally accepted project management standards and methodologies** such as PMBoK Guide, PRINCE2®, IPMA-ICB.





## Project Lifecycle



Appendix E: PM<sup>2</sup> and Agile

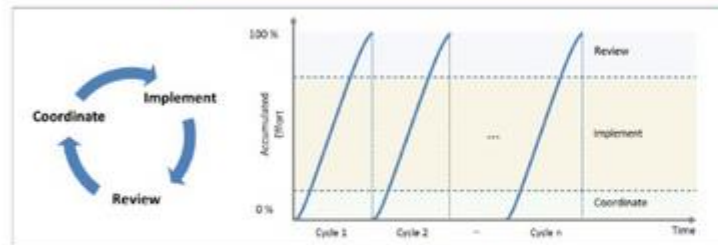
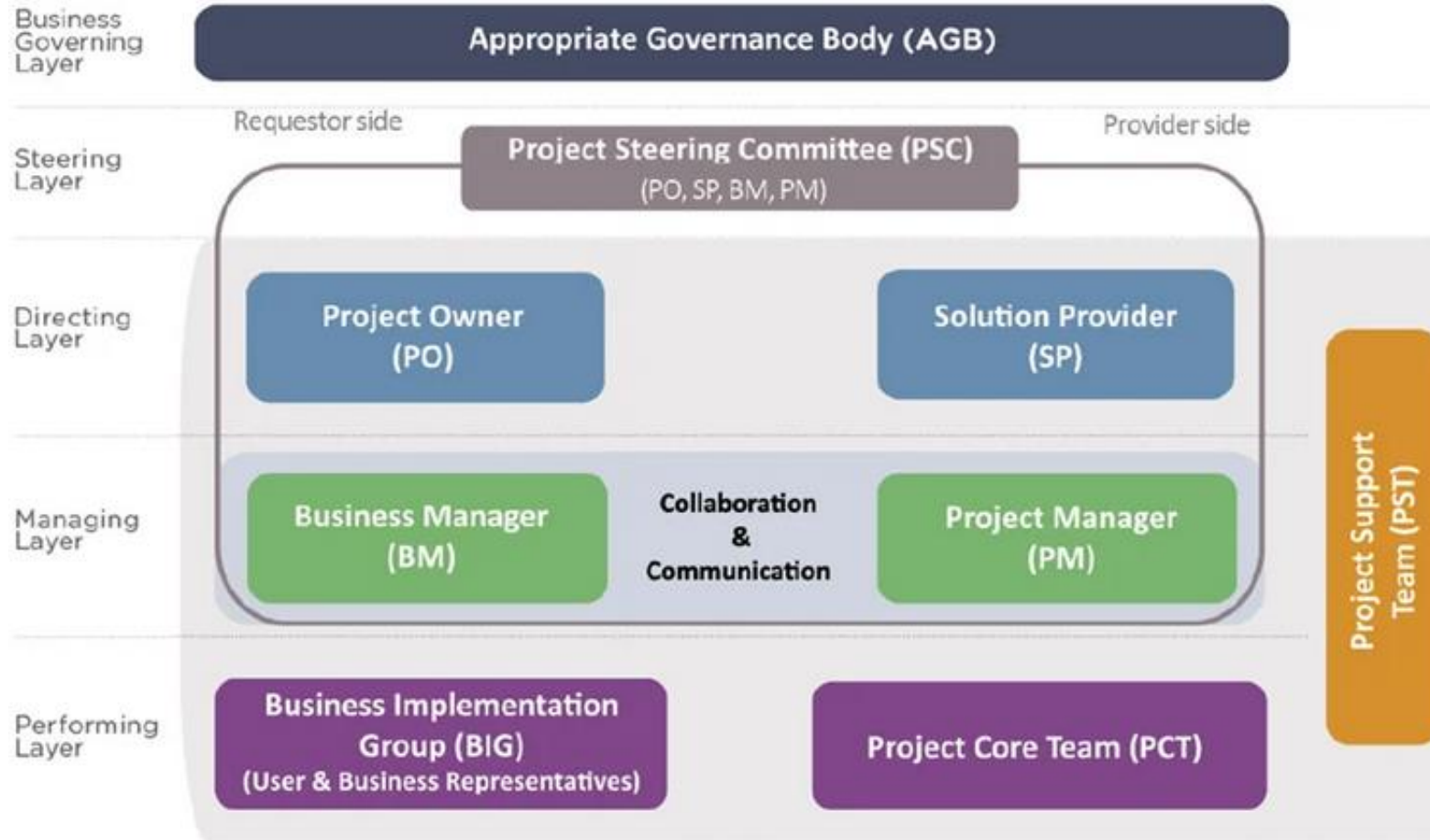


Fig. E.5: The Agile PM<sup>2</sup> CIR rhythm



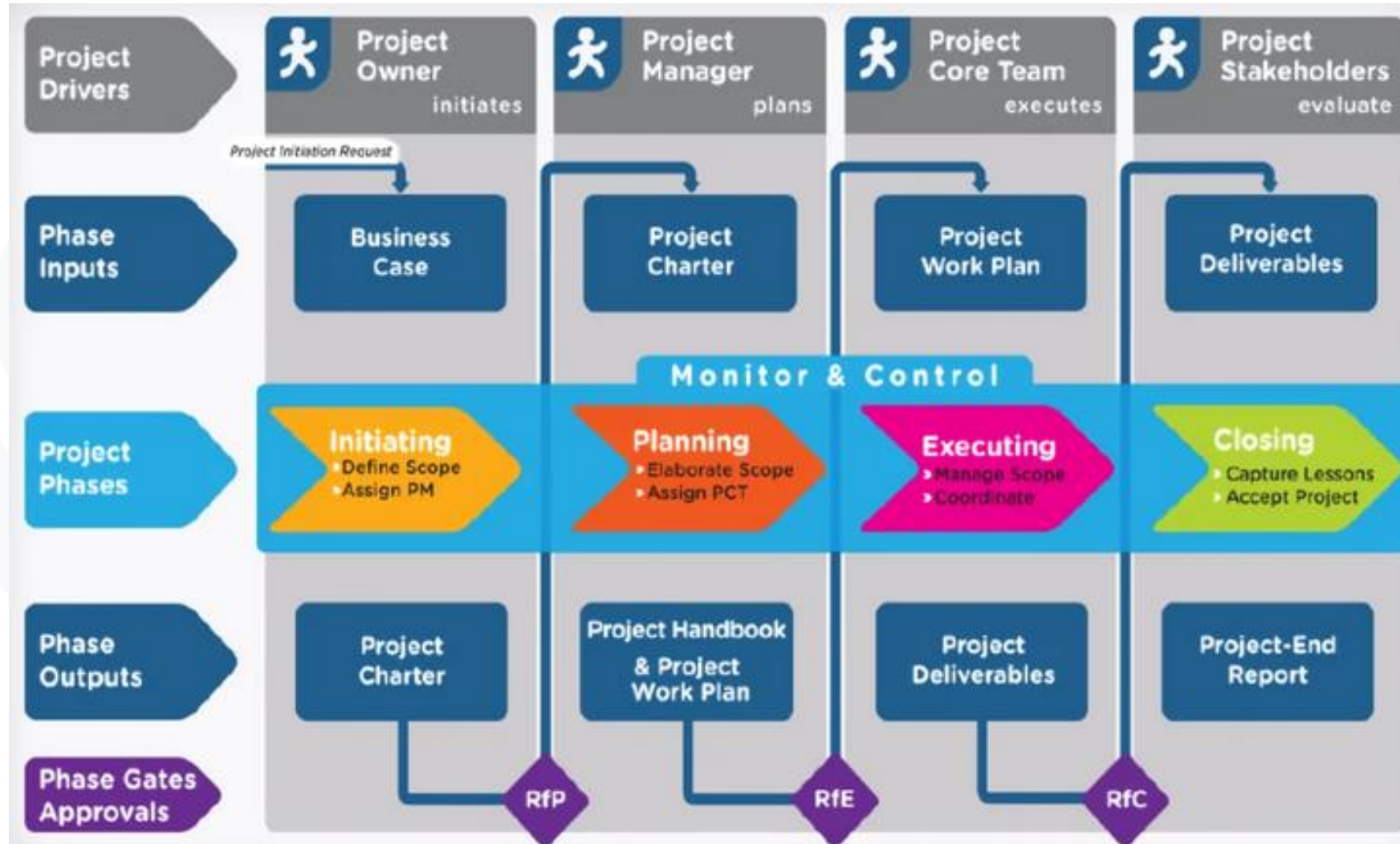
## PM<sup>2</sup> Processes



	Requestor Side	Provider Side	
Business Governing Layer	AGB (Appropriate Governance Body)	AGB (Appropriate Governance Body)	Business Governing Layer
Steering Layer	PSC (Project Steering Committee)	PSC (Project Steering Committee)	Steering Layer
Directing Layer	PO (Project Owner)	SP (Solution Provider)	Directing Layer
Managing Layer	BM (Business Manager)	PM (Project Manager)	Managing Layer
		CPM (Contractor's Project Manager)	
	PST (Project Support Team)	PMA (Project Manager Assistant)	
Performing Layer	BIG (Business Implementation Group)	PCT (Project Core Team)	Performing Layer

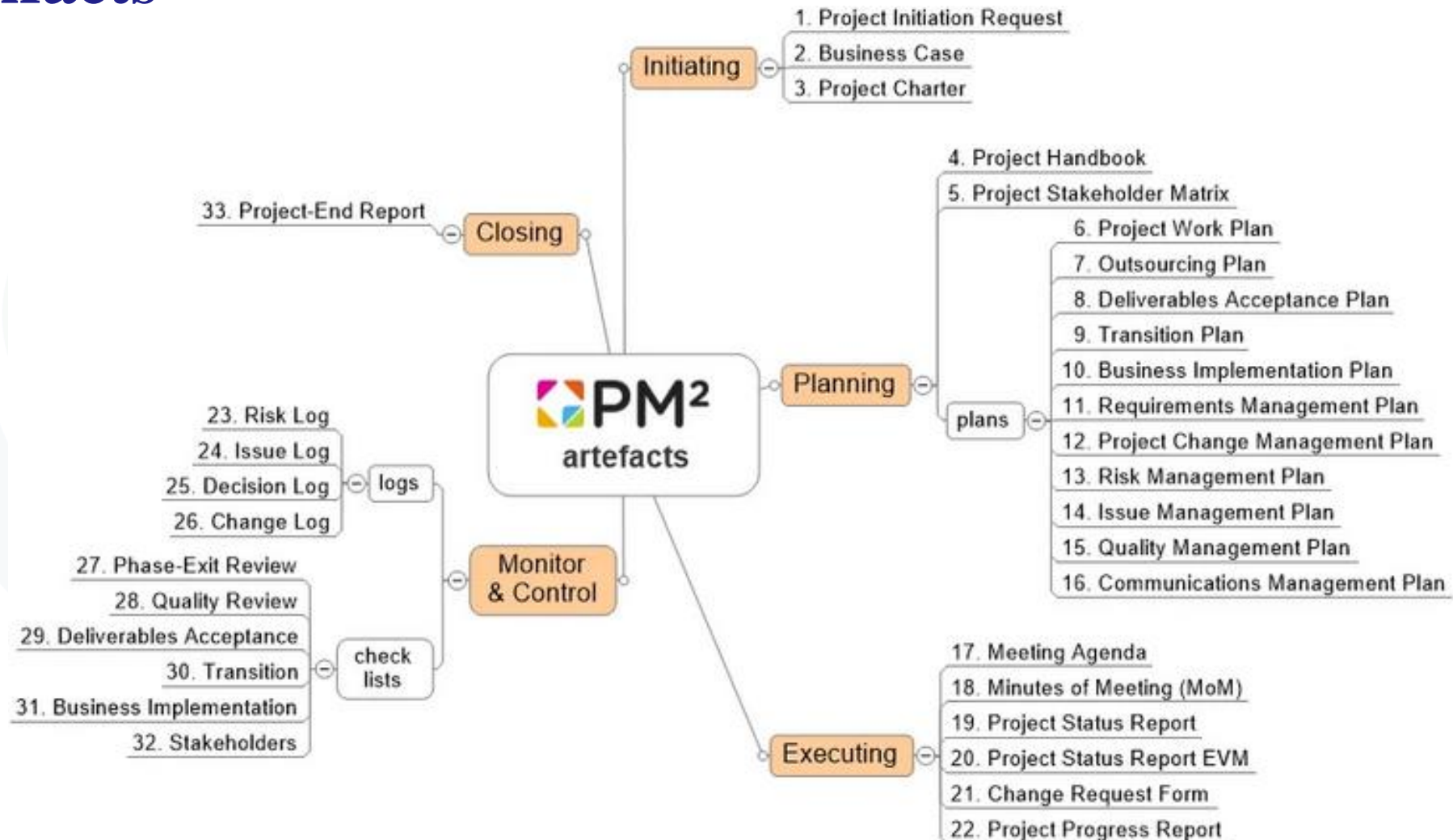
- Governance
- Advises & Decides
- Operational
- Supports (optional)
- Some decision power
- Acts
- Project Team

## PM<sup>2</sup> Processes



*New energy competence system and technology for WB energy stability system curriculum reform  
(Call: ERASMUS-EDU-2023-CBHE, Project number: 101129321)*

## PM<sup>2</sup> Artifacts

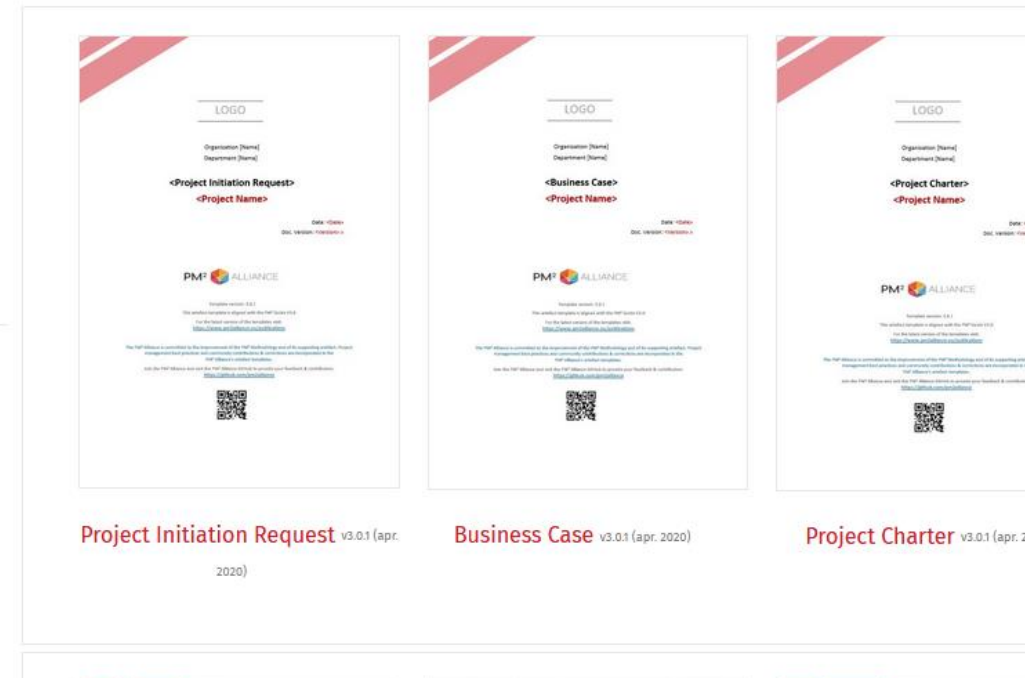


## PM<sup>2</sup> Templates



Download here the [.zip file](#) with all the PM<sup>2</sup> Artefacts templates

### INITIATING PHASE



The image displays three template documents for the Initiating Phase of a project. Each document features a red diagonal header, a 'LOGO' placeholder, and a 'PM<sup>2</sup> ALLIANCE' logo at the bottom. The first document is titled '<Project Initiation Request>' and '<Project Name>'. The second is titled '<Business Case>' and '<Project Name>'. The third is titled '<Project Charter>' and '<Project Name>'. Each document also includes a QR code and a date field.

**Project Initiation Request** v3.0.1 (apr. 2020)

**Business Case** v3.0.1 (apr. 2020)

**Project Charter** v3.0.1 (apr. 2020)



## Relevant Aspects

There are Artifacts already in the proposal (and in place):

- \* Project Charter
- \* Project WorkPlan
- \* Communications Management Plan
- \* Business Case (proposal)
- \* Business Implementation Plan
- \* Quality Management Plan

Does it make sense to develop some others? (Planning / Monitoring & Control)

- \* Risk Management Plan
- \* Requirements Management Plan
- \* Risk / Issue / Decision Logs
- \* Change Management Plan

Utility will be to clarify the management process to the reviewers and to exhibit professional behavior regarding such aspect.

# DIGGING INTO PM2 METHODOLOGY

**Thank-you for your attention**  
**Faleminderit per kohen tende**  
**Hvala vam puno na pažnji**  
**Хвала на времену**



**POLITÉCNICA**